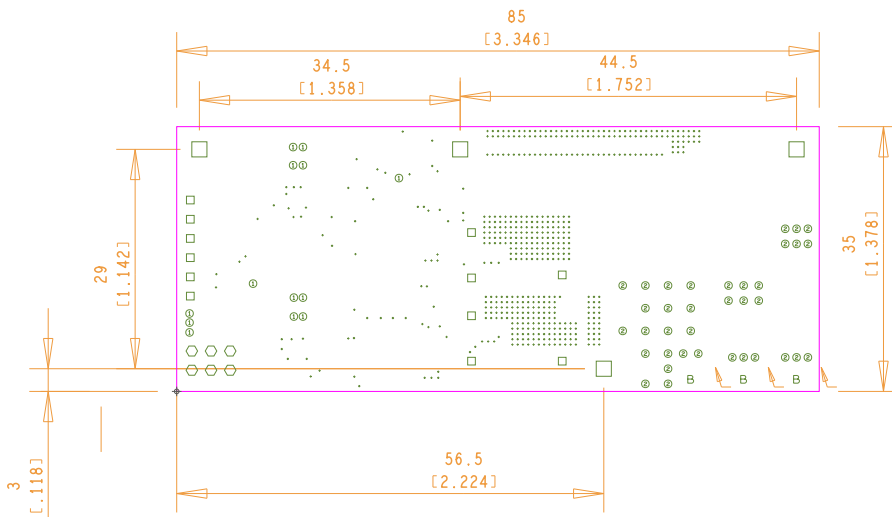


NOTES - UNLESS OTHERWISE SPECIFIED

1. ALL DIMENSIONS ARE IN MILLIMETERS.
2. THIS BOARD SHALL MEET THE REQUIREMENT OF IPC-A-6012 CLASS 2.
3. LAMINATE TO BE HIGH TO FR4 OR EQUIVALENT.
4. BOARD SHALL MEET THE REQUIREMENT OF UL 796 AND 94V-0 FLAMMABILITY RATING
5. VENDORS UL LOGO OR DESIGNATION SHALL BE LOCATED ON SECONDARY SIDE OF BOARD. RUBBER STAMPED OR SILKSCREENED.
6. SURFACE FINISH IS ENIG, 3-8 uINCHES of Au OVER MINIMUM 100uINCHES Ni
7. ALL HOLE DIAMETERS ARE STATED AS FINISHED HOLE SIZES. ALL PLATED THROUGH HOLES TO HAVE A MINIMUM OF 0.025mm CU
8. SOLDERMASK SHALL BE PHOTO-IMAGED LIQUID POLYMER, IN ACCORDANCE WITH IPC-SM-810, TYPE B, CLASS 1, OVER BARE COPPER. SOLDERMASK COLOR: GREEN
9. SILKSCREEN SHALL BE NON-CONDUCTIVE WHITE EPOXY INK AND TO BE REMOVED FROM SOLDER PADS PROVIDING A MINIMUM CLEARANCE OF 0.0762mm
10. THIS BOARD TO BE RoHS COMPLIANT
11. PANELING: NOT REQUIRED, ALLOWABLE AT MANUFACTURER'S DISCRETION




DRILL CHART: TOP to BOTTOM				
ALL UNITS ARE IN MILLIMETERS				
FIGURE	SIZE	TOLERANCE	PLATED	QTY
.	0.305	+0.076/-0.076	PLATED	518
⊙	0.432	+0.025/-0.025	PLATED	13
⊙	0.711	+0.0/-0.0	PLATED	36
□	1.016	+0.076/-0.076	PLATED	12
○	1.143	+0.076/-0.076	PLATED	6
B	1.651	+0.0/-0.0	PLATED	3
□	4.0	+0.05/-0.05	NON-PLATED	4

	# SURFACE - AIR 0 MM
L1: TOP CONDUCTOR - 20Z COPPER 0.07 MM	# DIELECTRIC - FR-4 0.36 MM
L2: M1 CONDUCTOR - 20Z COPPER 0.07 MM	# DIELECTRIC - FR-4 0.6 MM
L3: M2 CONDUCTOR - 20Z COPPER 0.07 MM	# DIELECTRIC - FR-4 0.36 MM
L4: BOTTOM CONDUCTOR - 20Z COPPER 0.07 MM	# SURFACE - AIR 0 MM

DESIGN CROSS SECTION CHART
TOTAL THICKNESS 1.6 MM

BOARD DETAILS

Minimum Trace Width (Gap): 0.254 mm
 Minimum Feature Size (Width): 0.254 mm
 Minimum Hole Size: 0.3 mm
 Copper weight: 2oz all layers
 Total number of drills: 597

	Product GS66508B HALF BRIDGE DAUGHTER BOARD	Sheet Description FABRICATION DRAWING	Rev A
	Date 25-JUN-2016	Drawing GS66508B-EVBDB-SCH	Sheet 1 of 1